

# Welcome to the West Area Planning Committee

- This planning committee meeting is held in public but it is not a public meeting.
- There will be an opportunity for the public to address the committee on each application.
- If you wish to speak for or against a planning application, you need to have either requested it in advance, or hand in one of the available speaker forms, or speak to the clerk.
- Information on meeting protocol and conduct at the committee is set out in the Code of Practice.
- This is in the committee agenda just before the first planning application report.

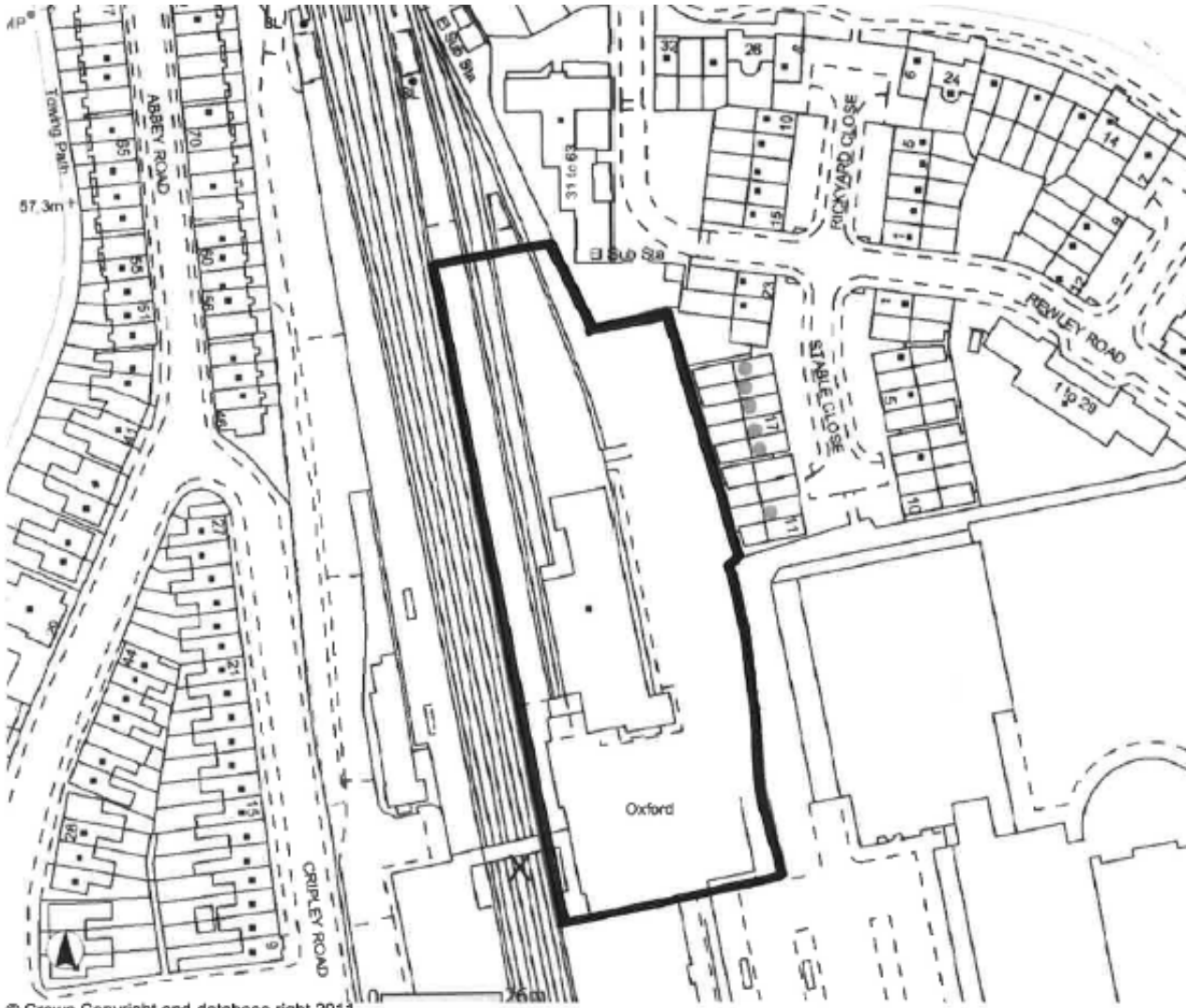


# Oxford Railway Station: 15/00096/PA11



# Site Plan

73



© Crown Copyright and database right 2011,  
Ordnance Survey 100019348

[www.oxford.gov.uk](http://www.oxford.gov.uk)



Existing TOC building

Access ramp



# Existing TOC, public short stay parking and pedestrian over bridge



# Existing Platform 3 and back of TOC building



3

Get 1140 Booking On Line  
at Tachina, Hasford, Ruge Bottom and Ban  
Park Great Harwood  
08:21:58 Platform 3

Food Waste

76

Existing TOC building

View across existing staff car park

Stable Close

Rewley Road



# Properties in Stable Close



78

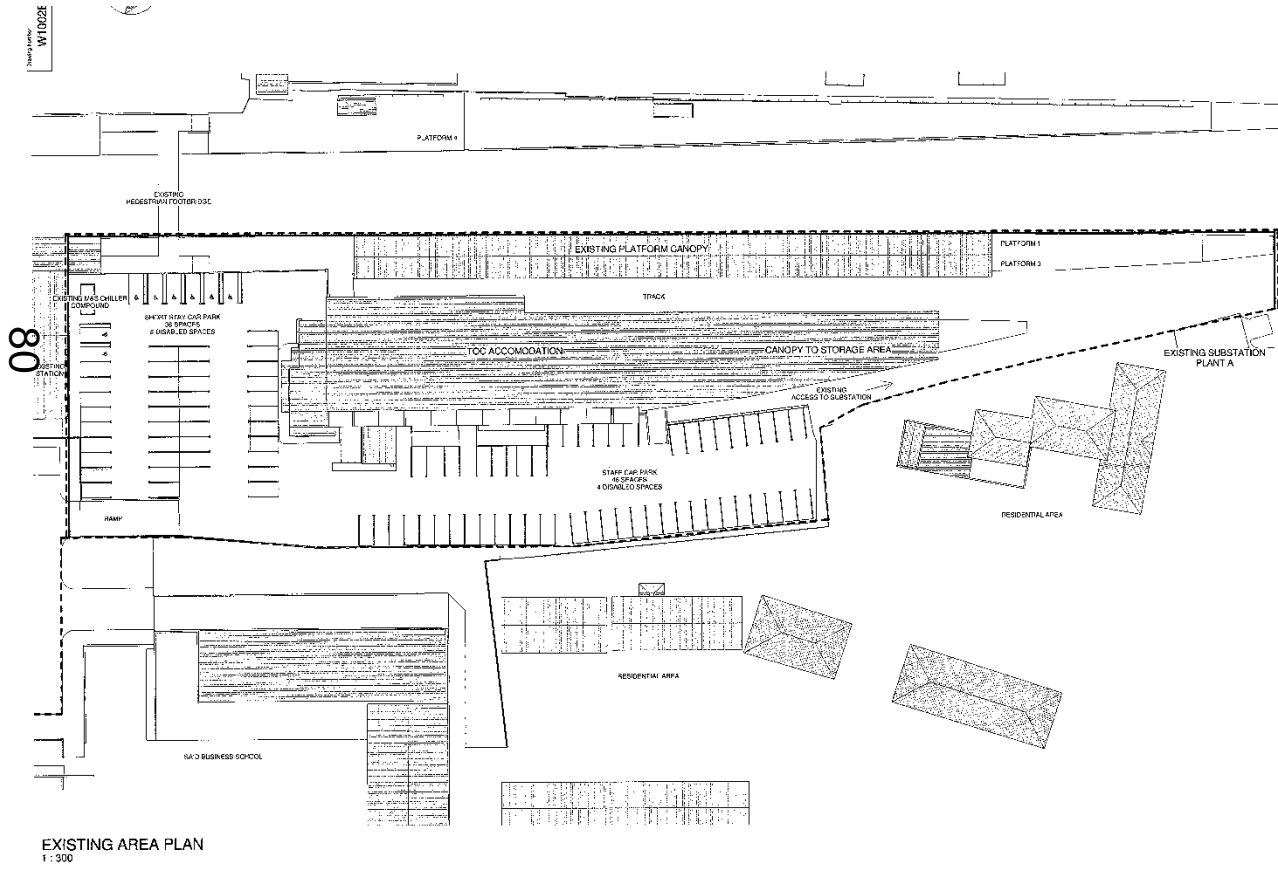


Existing station, public short stay parking,+ pedestrian over bridge



# Existing Area Plan – Accommodation Building

[www.oxford.gov.uk](http://www.oxford.gov.uk)

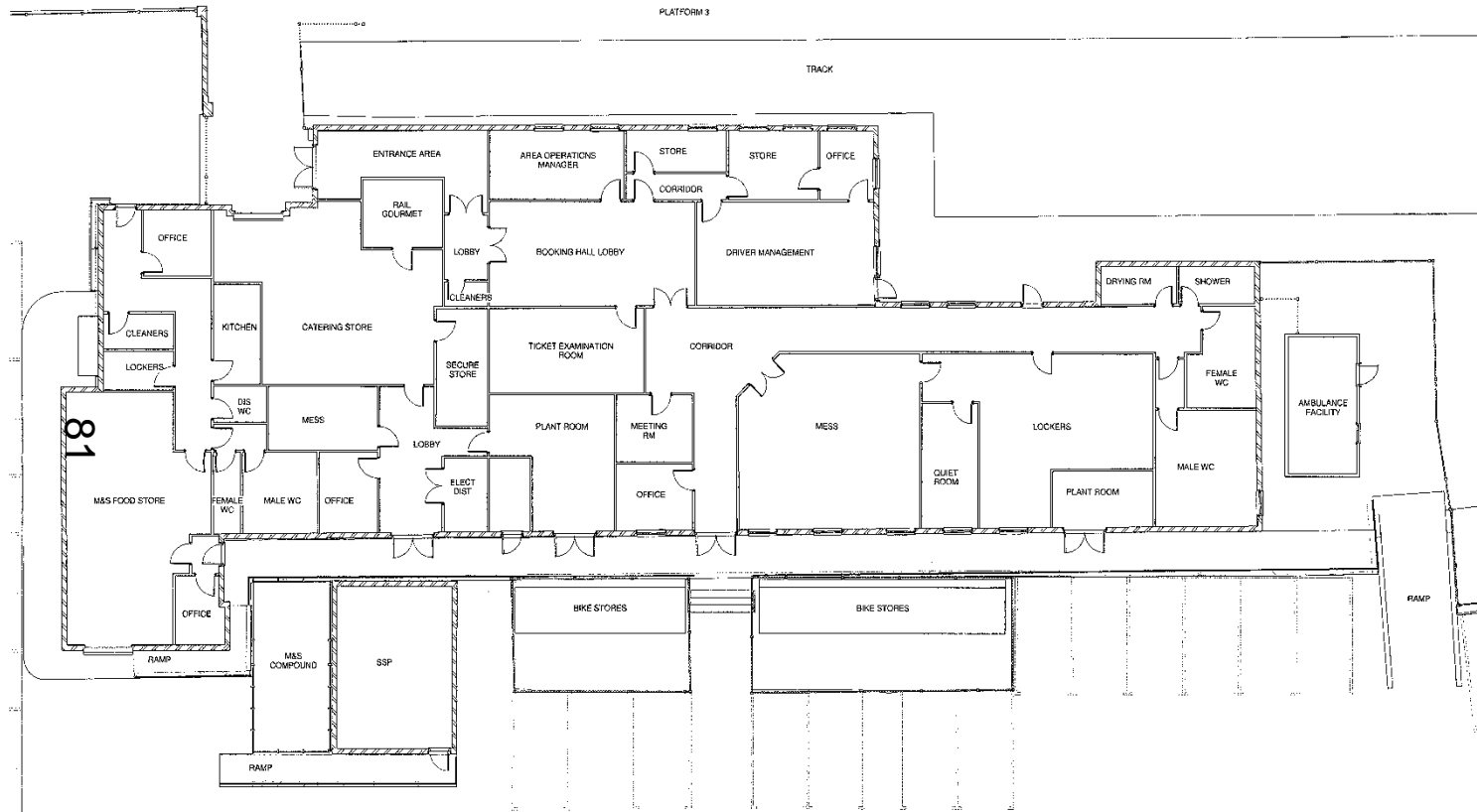


# Existing Floor Plan – Accommodation Building

[www.oxford.gov.uk](http://www.oxford.gov.uk)



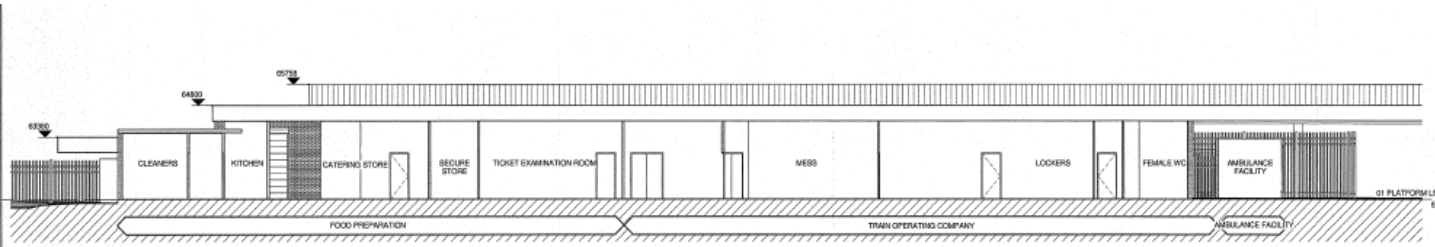
**OXFORD  
CITY  
COUNCIL**



EXISTING GROUND FLOOR  
1 : 100

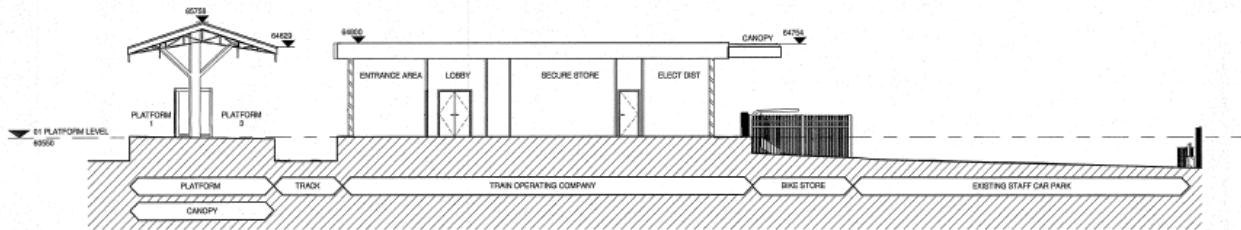


# Existing Building Sections – Accommodation Building



SECTION A  
1 : 100

82



SECTION B  
1 : 100

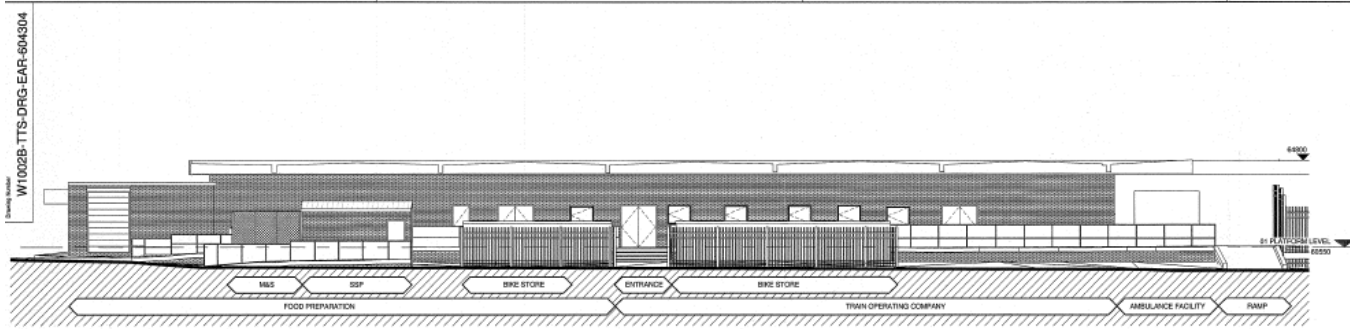


KEY PLAN

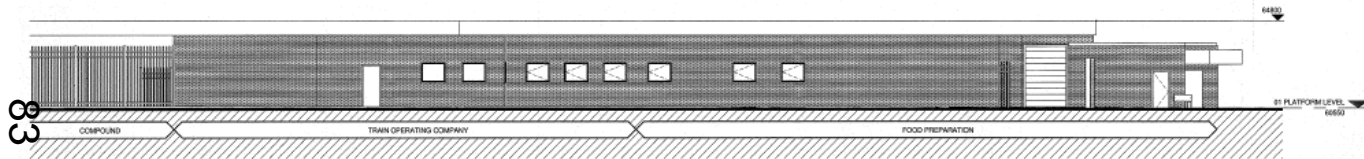


# Existing Building Elevations – Accommodation Building

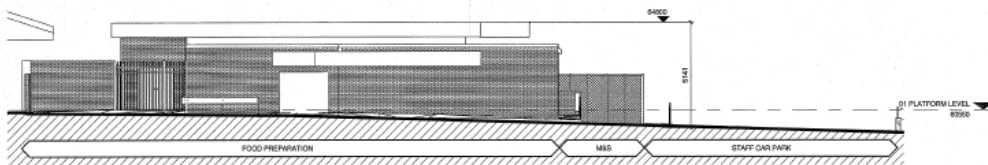
www.oxford.gov.uk



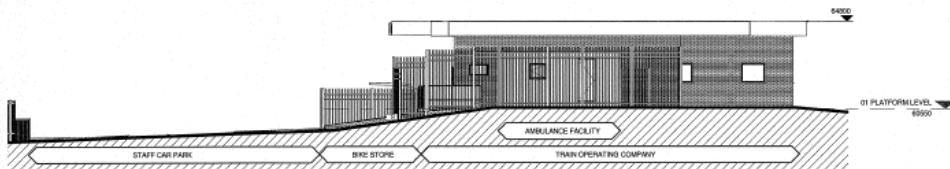
EXISTING EAST ELEVATION  
1 : 100



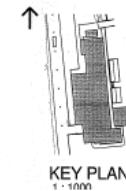
EXISTING WEST ELEVATION  
1 : 100



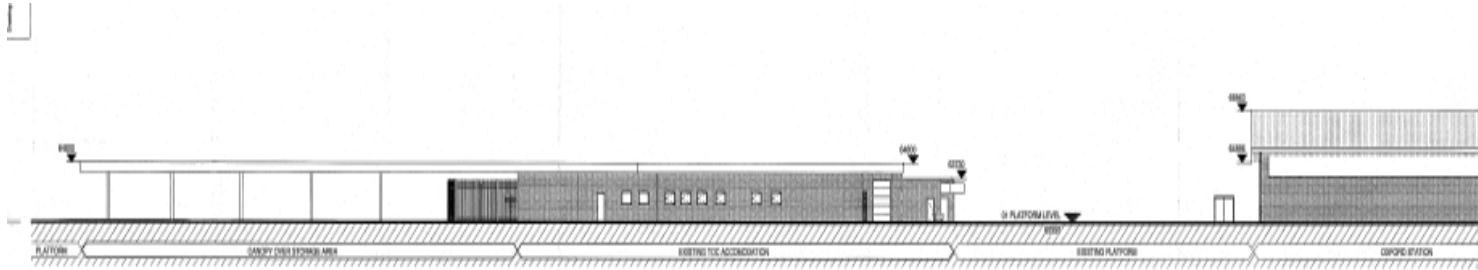
EXISTING SOUTH ELEVATION  
1 : 100



EXISTING NORTH ELEVATION  
1 : 100

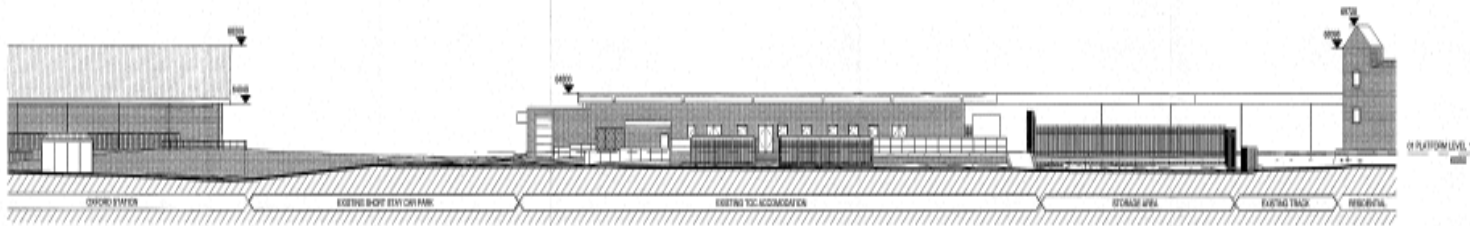


# Existing Elevations (with context 1/2)



EXISTING EAST ELEVATION  
(WITH CONTEXT)  
1:200

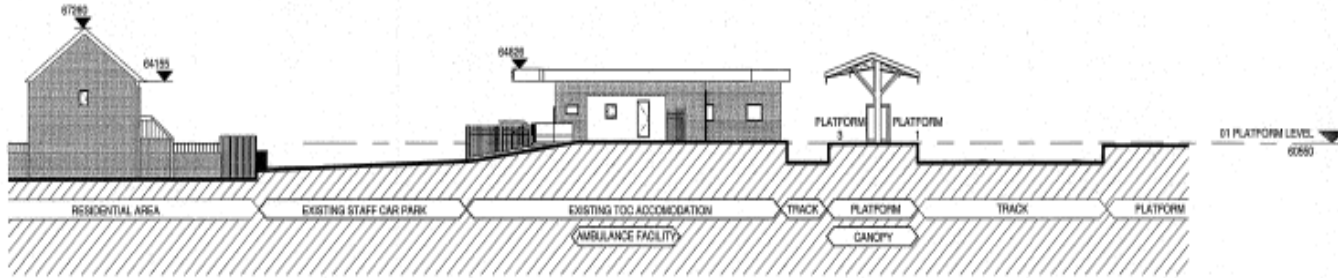
84



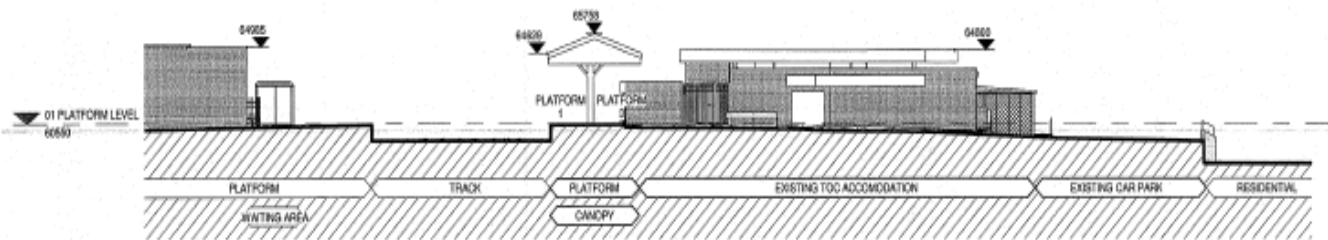
EXISTING WEST ELEVATION  
(WITH CONTEXT)  
1:200



# Existing Elevations (with context 2/2)



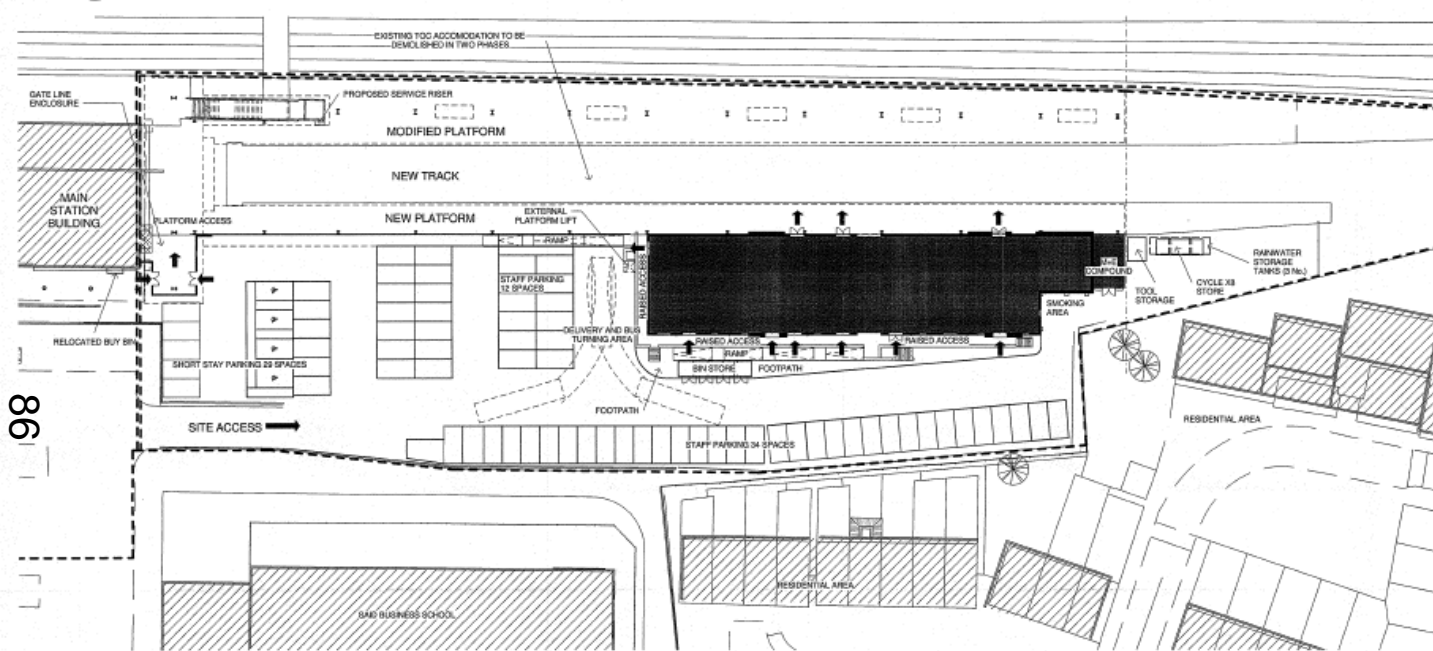
NORTH ELEVATION  
1 : 200



SOUTH ELEVATION  
1 : 200



# Proposed Site Layout



98

**SITE LAYOUT**  
1 : 300

	EXISTING	PROPOSED	DIFFERENCE	COMMENTS
STAFF	46	46	0	STAFF PARKING PROVISION MAINTAINED
STAFF DISABLED	4	0	-4	REDUCTION IN STAFF DISABLED PARKING PROVISION FOLLOWING FEEDBACK.
SHORT STAY	36	25	-11	TO MAINTAIN SIMILAR STAFF PARKING PROVISIONS THERE IS A REDUCTION IN THE NUMBER OF PUBLIC SHORT STAY PARKING SPACES.
SHORT STAY DISABLED	8	4	-4	REDUCTION IN THE NUMBER OF DISABLED PUBLIC SHORT STAY PARKING SPACES.

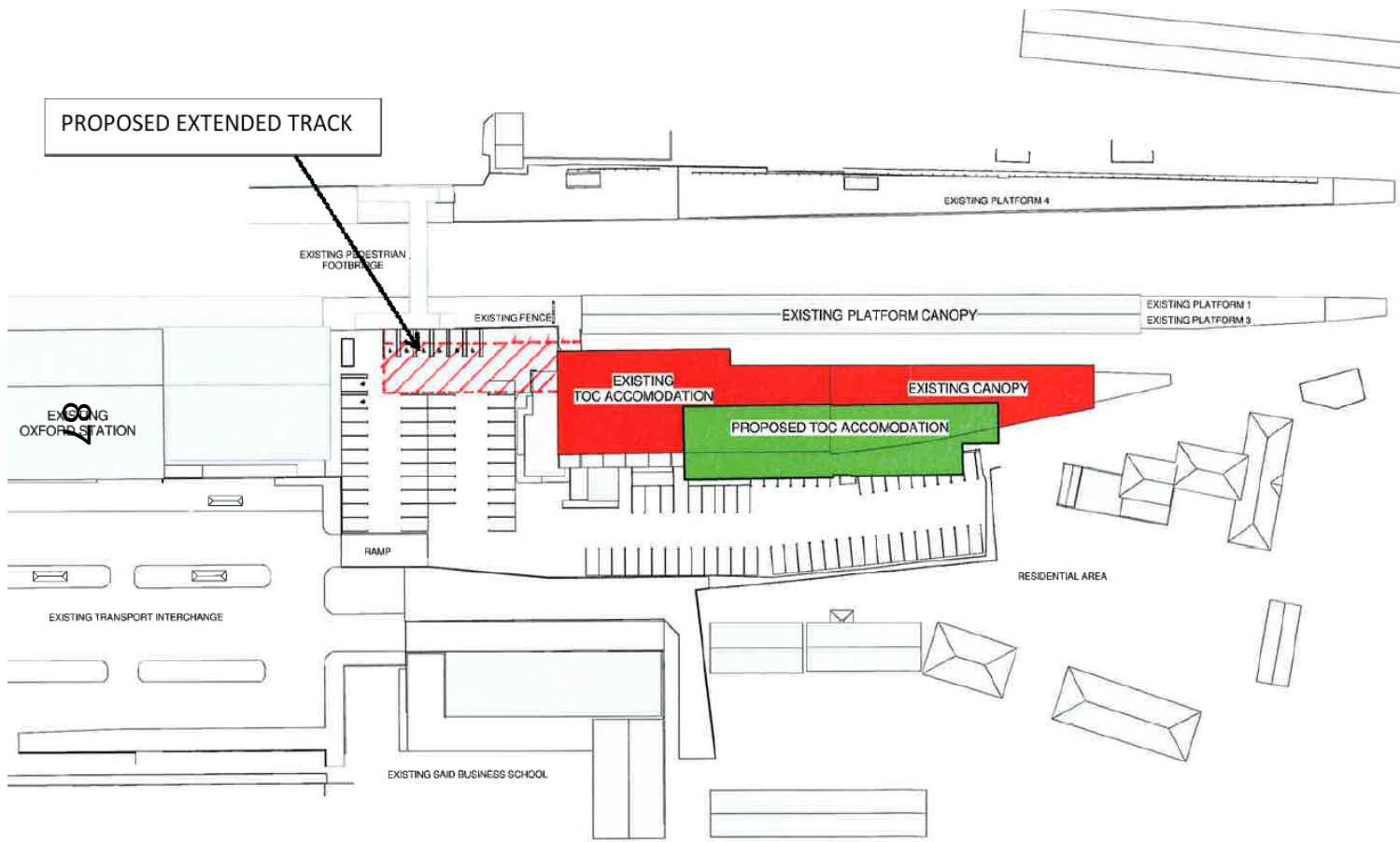
**CAR PARKING**  
1 : 50





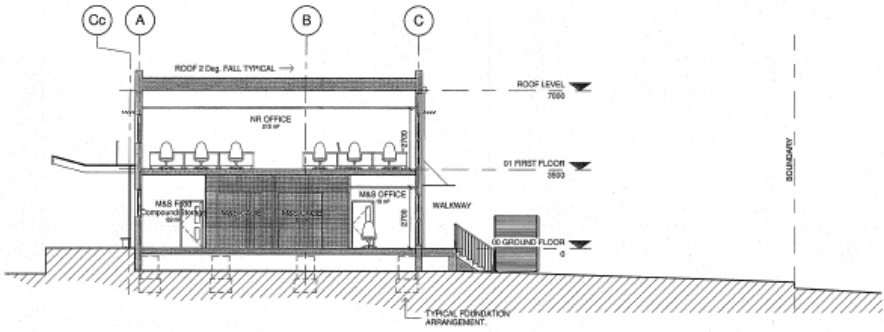
# Comparison Drawing

[www.oxford.gov.uk](http://www.oxford.gov.uk)



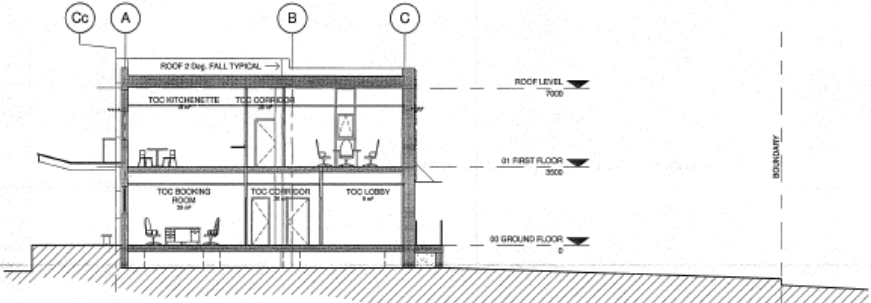


# Proposed Sections

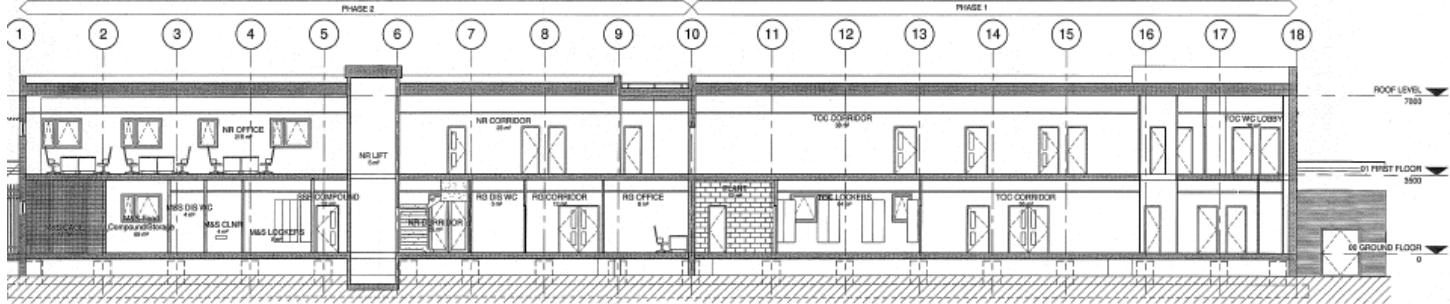


**PROPOSED SECTION 1**  
1 : 100

68



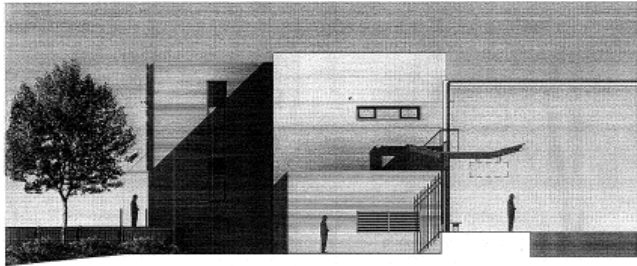
**PROPOSED SECTION 2**  
1 : 100



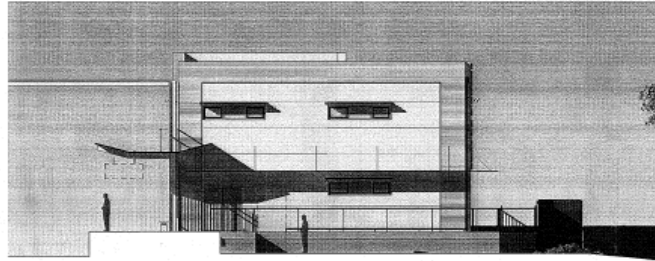
**PROPOSED SECTION 3**  
1 : 100



# Proposed Elevations

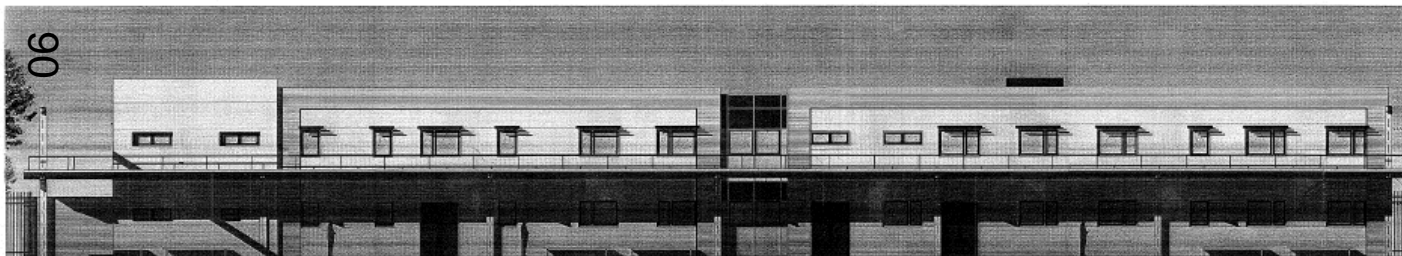


**PROPOSED NORTH ELEVATION**  
1 : 100



LIGHTWEIGHT METAL STEPS/RAMP AND WALKWAY WITH NON SLIP FINISH

**PROPOSED SOUTH ELEVATION**  
1 : 100



**PROPOSED WEST ELEVATION**  
1 : 100



CLOSE BOARDED TIMBER BIN STORE ENCLOSURE (FINISH TRG)

LIGHTWEIGHT METAL STEPS/RAMP AND WALKWAY WITH NON SLIP FINISH

**PROPOSED EAST ELEVATION**  
1 : 100

[www.oxford.gov.uk](http://www.oxford.gov.uk)



**OXFORD  
CITY  
COUNCIL**

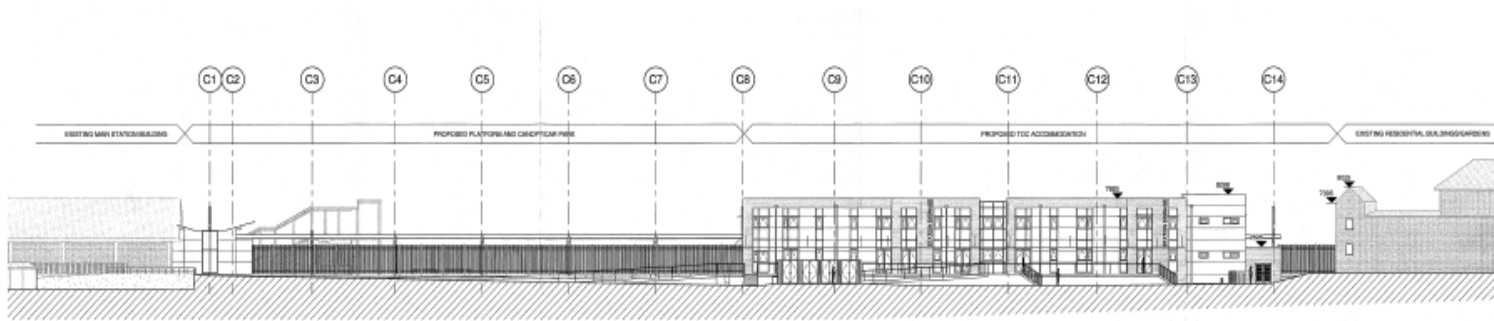


# Proposed Elevations (with context)

www.oxford.gov.uk

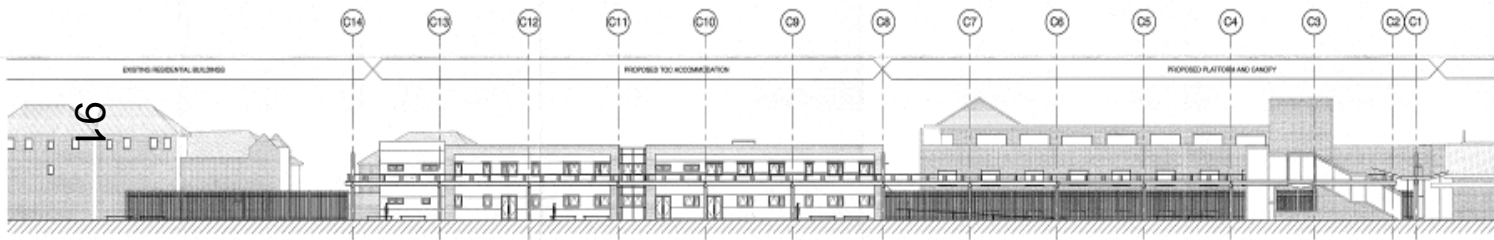


OXFORD  
CITY  
COUNCIL



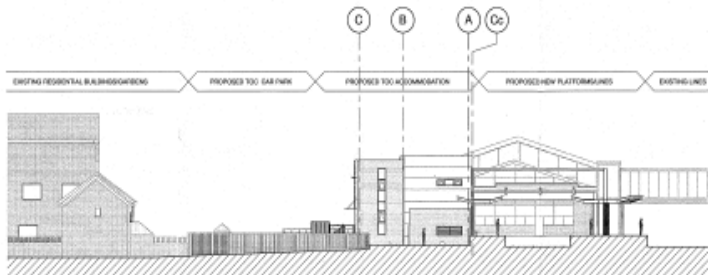
PROPOSED EAST ELEVATION (WITH CONTEXT)

1:200



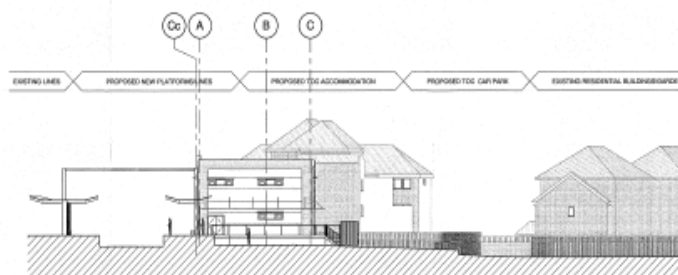
PROPOSED WEST ELEVATION (WITH CONTEXT)

1:200



PROPOSED NORTH ELEVATION (WITH CONTEXT)

1:200

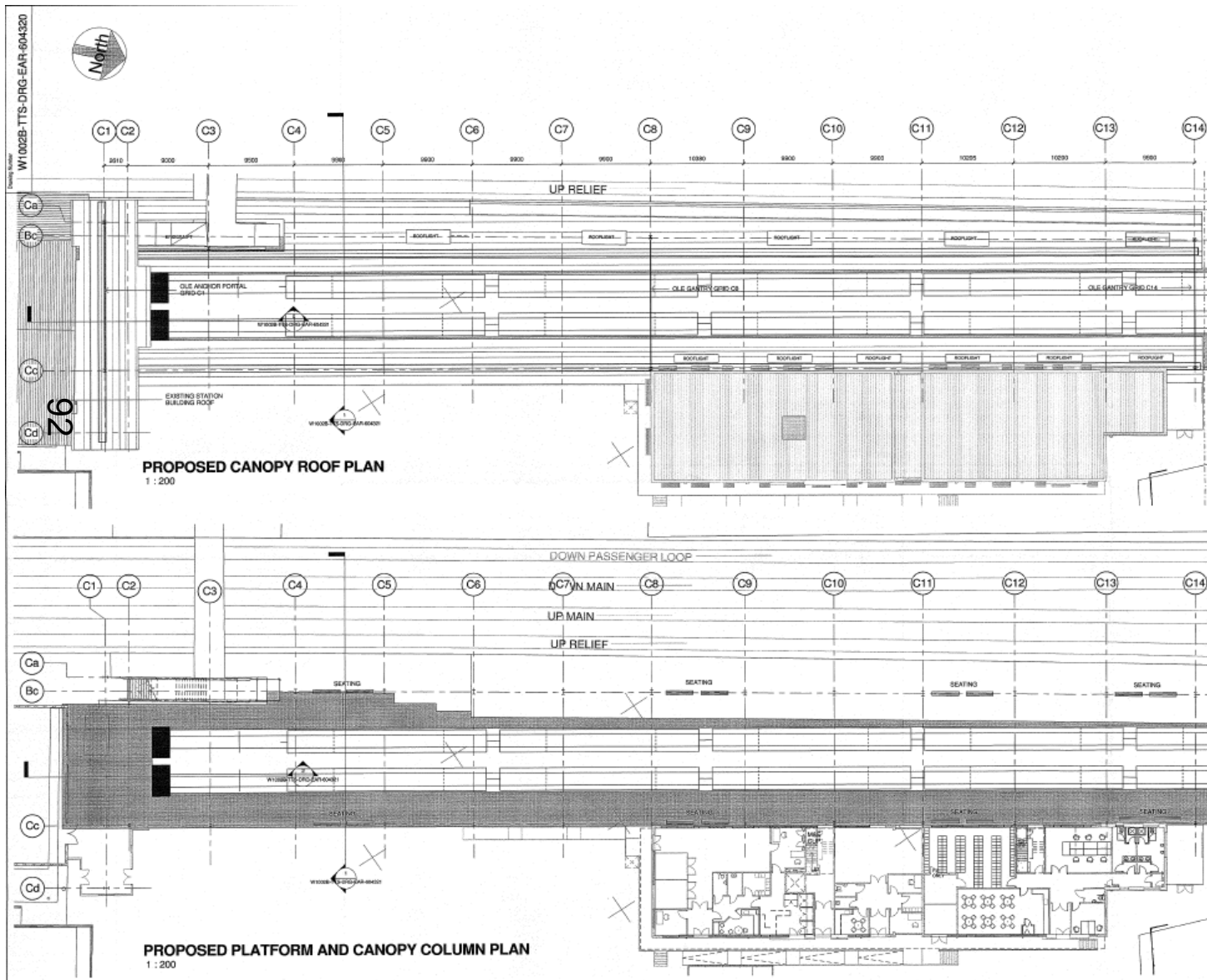


PROPOSED SOUTH ELEVATION

1:200



# Proposed Platform and Roof Plans

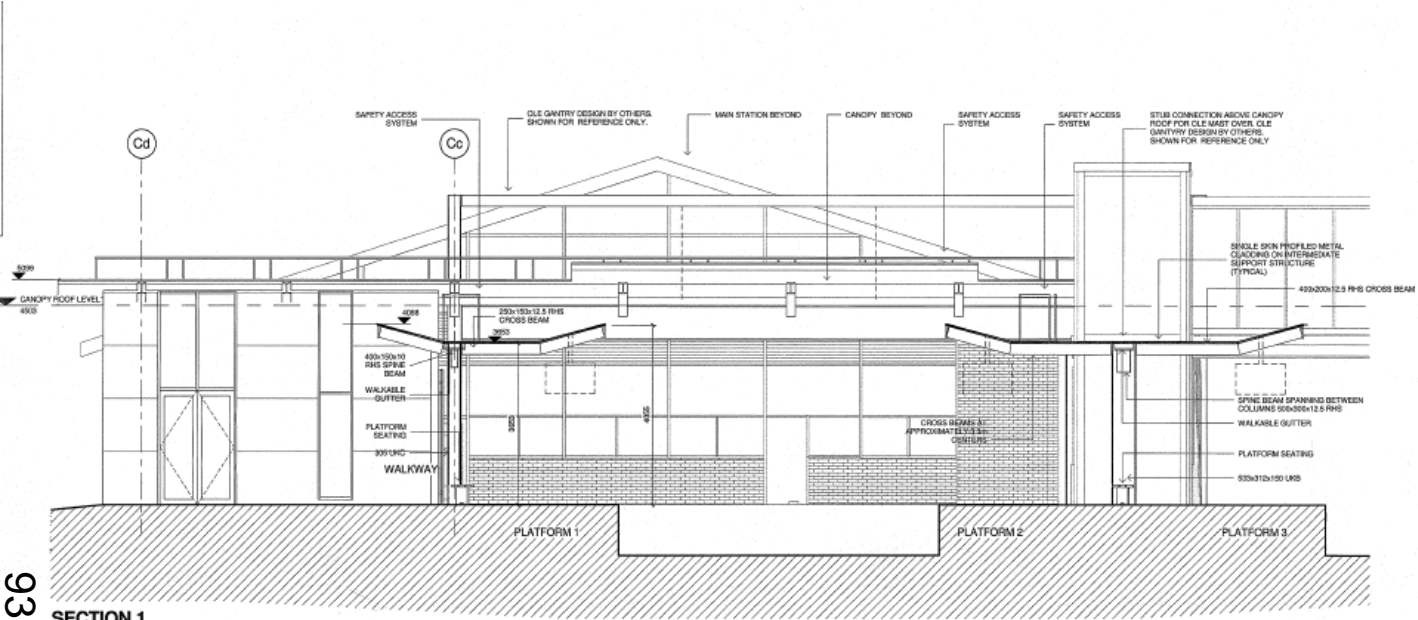


[www.oxford.gov.uk](http://www.oxford.gov.uk)

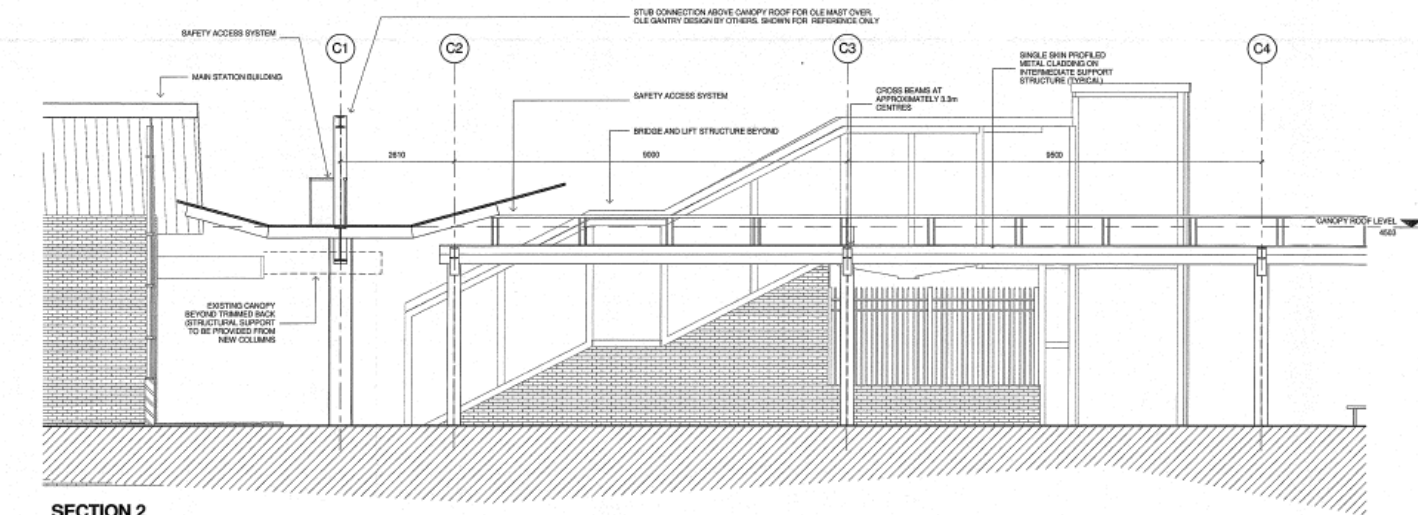


# Proposed Canopy Sections

www.oxford.gov.uk



SECTION 1  
1: 50

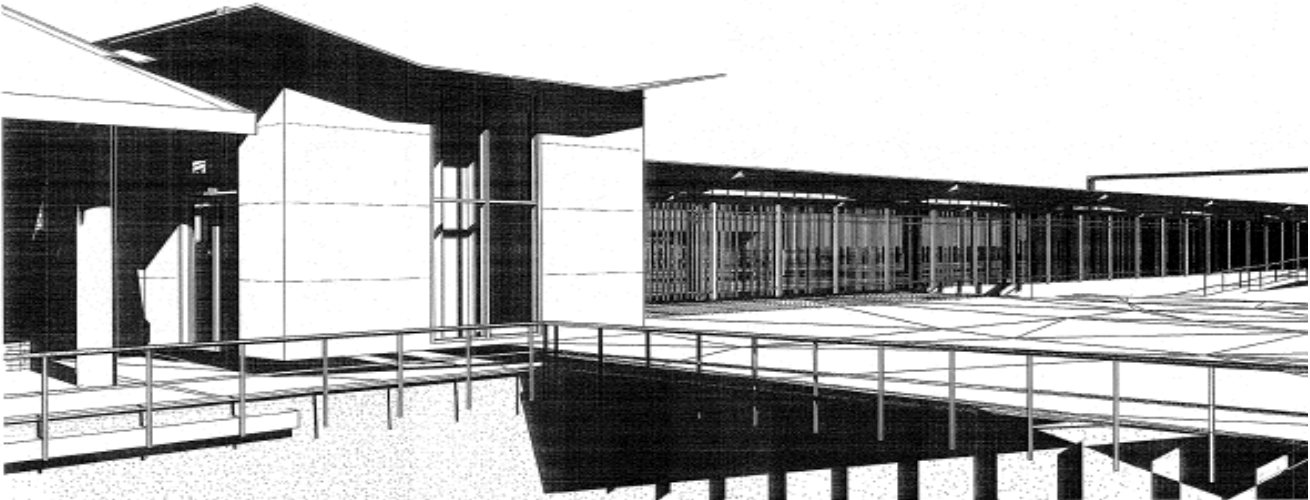


SECTION 2  
1: 50

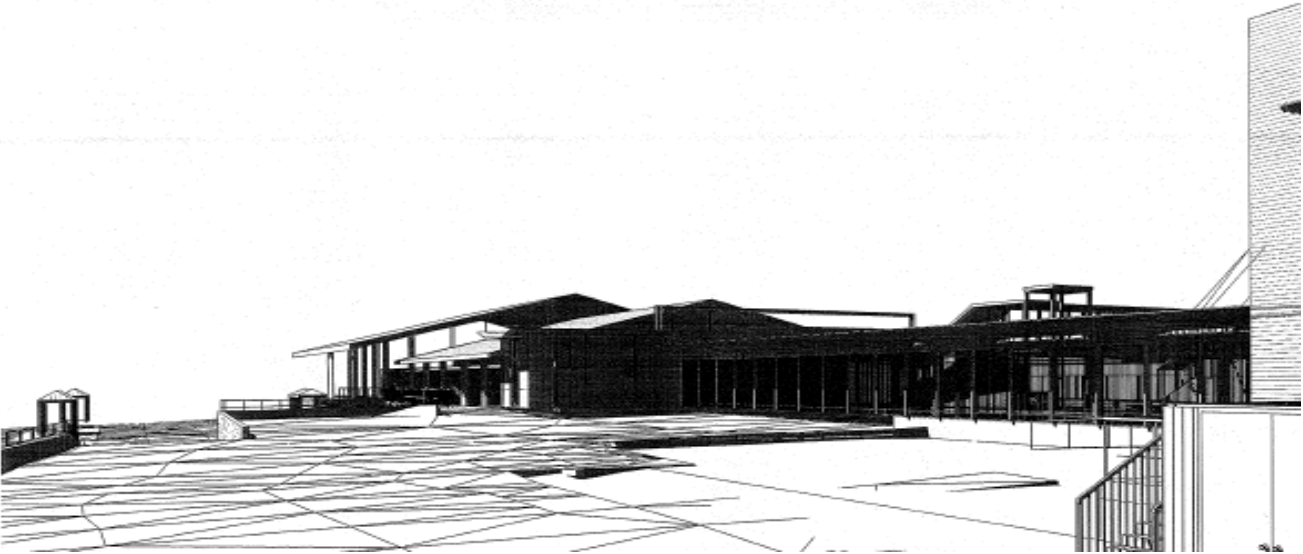


# Proposed Canopy 3D View

94



CANOPY 3D VIEW 1



[www.oxford.gov.uk](http://www.oxford.gov.uk)

